

# DO Buzz Newsletter

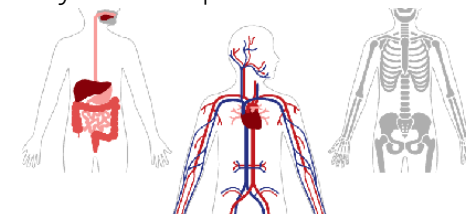
## October 2023



### Latest News

#### ◇ Grant announcement:

- Presenting DO's latest collaborative project: "Representing human anatomy for computation and communication: Synergistic development of an anatomical ontology and semantically-augmented anatomical graphics." A NIGMS R01 grant from the University of Kentucky ([Melissa Clarkson, PI](#)).
- The project will create the Foundational Model of Human Anatomy (FMHA) as a derivative of the FMA and will develop a web application for graphically-driven anatomy-based exploration of the Disease Ontology!



### Upcoming Meetings

#### [17th Annual Biocuration Conference](#)

March 5-8, 2024

### Global Impact

The global impact of the DO, demonstrates the breakdown of [DO's usage worldwide](#) by subcontinent and is updated quarterly. Assessed with Google Analytics, from 2008 to mid-2023 by sub-continent are shown, with "Unknown" representing users for whom Google Analytics could not identify a geographic location. Total sub-continent = 23; Total countries = 201; Total new users = 229,769.

#### ◇ The DO had fruitful conference attendances:

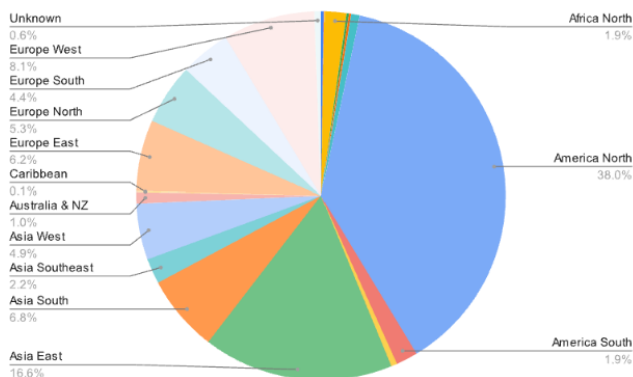
- ISMB/ECCB 2023 conference in Lyon, France with the Presentation "A 20-year journey developing the disease open science ecosystem."
- ICBO-ONTOBRAS Dual Conference 2023 in Brasilia, Brazil on the topic of "The Role of Ontologies in Artificial Intelligence and Machine Learning."

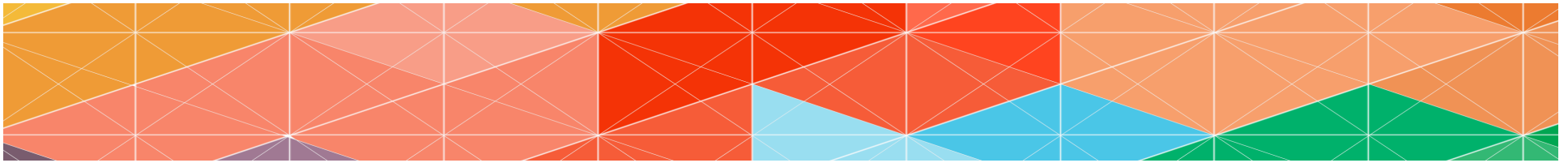
#### ◇ Have you watched our newest youtube videos yet?

- [Machine learning and biocuration](#): Sponsored by [ISB](#)
  - The goals of this workshop are to initiate dialog in order to gain a broader understanding of biocuration and ML needs, to reveal challenges and limitations of developing ML approaches, to foster biocuration support for ML tools, and to facilitate a greater understanding of applications where ML tools are being applied.
- [Panel ML Biocuration](#):
  - Gaining perspective towards enhancing the intersection of biocuration and machine learning. Panel 2: Biocuration - ML - mapping data between resources.

### Human Disease Ontology at a Glance

Disease classes	Definitions	Logical axioms	Imports	Cross-references
11,386	9,022 (79.24%)	8276 subClassOf/726 equivalentClass	15 sources/ 4,492 xrefs	14 sources/37,574 xrefs





## Citations & New Community Resources Using the Disease Ontology

To date, 1,867 works citing the Disease Ontology are listed at [lens.org](https://www.ncbi.nlm.nih.gov/pmc/articles/PMC6111403/). For example:

- ◇ BALDR: A Web-based platform for informed comparison and prioritization of biomarker candidates for type 2 diabetes mellitus. doi: [10.1371/journal.pcbi.1011403](https://doi.org/10.1371/journal.pcbi.1011403), PMID: [37590326](https://pubmed.ncbi.nlm.nih.gov/37590326/).
- ◇ Flame (v2.0): advanced integration and interpretation of functional enrichment results from multiple sources. doi: [10.1093/bioinformatics/btad490](https://doi.org/10.1093/bioinformatics/btad490), PMID: [37540207](https://pubmed.ncbi.nlm.nih.gov/37540207/)
- ◇ Machine learning and bioinformatics framework integration reveal potential characteristic genes related to immune cell infiltration in preeclampsia. doi: [10.3389/fphys.2023.1078166](https://doi.org/10.3389/fphys.2023.1078166), PMID: [37389124](https://pubmed.ncbi.nlm.nih.gov/37389124/)

A thorough list of Ontologies, Resources and Methodologies that use the DO is available at <https://disease-ontology.org/community/use-cases>.

Disclaimer: Article spotlights and community resource lists highlight utilization of the Human Disease Ontology and are not an endorsement of any person(s), resource(s), method(s), or finding(s).

## Latest Release Notes

Data releases are available in DO's [GitHub repository \(previous release notes\)](#)

### Release #132: v2023-10-21

This DO release includes 11,386 diseases, 8,276 SubClassOf and 726 EQ axioms. This release includes the addition of 13 disease terms, 19 definitions, 25 SubClassOf axioms and 1 EQ axiom. New and revised content includes: added synonyms for autosomal recessive spinocerebellar ataxia; the addition of autosomal recessive spinocerebellar ataxia, amyotrophic lateral sclerosis subtypes; revised classifications for schwannomatosis and neurofibromatosis, rhabdomyosarcoma; the addition of new disease terms: Legius syndrome and Watson syndrome, diphthamide deficiency syndrome and subtypes, renal medullary carcinoma; augmentation of the DO\_cancer\_slim, updated nomenclature for thyroid cancer and a revised NCIthesaurus slim, produced programmatically based on NCI xrefs or skis mappings.

### Release #131 v2023-09-28

This release of the Human Disease Ontology includes 11,373 disease classes, 9,003 with textual definitions (79.2%). Updates include revised mappings based on UMLS 2023AA; the addition of early-onset epilepsy 2 & 3, Yoon-Bellen neurodevelopmental syndrome, NEDDFAC, SCAN3 and updates to other SCAN diseases; revision of viral infectious diseases to incorporate official viral nomenclature changes from ICTV; reactivation of Epstein-Barr virus infectious disease; and various definition updates & corrections.

## DO on Social Media



- Check out the **Latest Videos** on the Disease Ontology's [YouTube Channel!](#)

For the latest updates and other information, follow the Disease Ontology on **Twitter!**

[@diseaseontology](#)



Biomedical Ontology  
World

